

**TOPPRO**

INDIA'S PREMIUM FITNESS EQUIPMENTS BRAND

# DOMESTIC SERIES



[WWW.TOPPROFITNESS.COM](http://WWW.TOPPROFITNESS.COM)

[TOPPROFITNESS](https://www.facebook.com/topprofitness)

[TOPPROFITNESS](https://www.instagram.com/topprofitness)

[TOPPROFITNESS](https://www.youtube.com/channel/UC...)

## COMPANY PROFILE

# TOPPRO®

**TOPPRO** is a Registered Trademark of **M/s. K.C. VERMA AND COMPANY ( ISO 9001:2015 )** which was established in 1972 by **LATE SH. K.C. VERMA & LATE SH. ARUN VERMA**, under their blessings and guidance, we have thrived to become INDIA'S PREMIUM FITNESS EQUIPMENT BRAND. With over 50 years of experience in customer satisfaction and product development our commitment to gym equipments and sports business is not simply selling products but taking responsibility and providing timely services to the clients with professional guidance for equipment selection at all times. All TOPPRO Products are **EN-957 & CE-3361** Certified for Safety.

We at TOPPRO always believe in **"Quality, Commitment & Service"** as our slogan and that has been our driving force to serve our customers with fitness equipments which have been exclusively designed in Germany and certified for quality by **LPI Taiwan**.

Our extensive range of well designed cardio, strength and outdoor equipments are made to serve all segments of society from beginners to gym trainees to hard core trainees to hard core trainers, our products have left a mark in every sphere of fitness training. With our organized and widely spread dealer network throughout the country, our dealers have always promoted **TOPPRO** equipments with confidence and service facility unmatched.

We undertake to continuously work for the up gradation of our industry and setting quality, commitment and service standards for others to follow. We have transformed our working style to evolve as a market leader with distinct identity. We appreciate your valuable suggestions and look forward to serving you with our products.



## BRAND PROFILE

# TOPPRO®



We at **TOPPRO** always believe in "**Quality, Commitment & Service**" as our slogan and that has been our driving force to serve our customers with Fitness Equipments which have been exclusively designed in **Germany** and certified for quality by **LPI TAIWAN**.

Our extensive range of well designed Cardio & Strength equipments are made to serve all segments of society from beginners to gym trainees to professional trainers, Our products have left a mark in every sphere of fitness training.

With our professional sales & marketing team we are always looking out to explore new markets & the sales team is backed with a strong professional service team to cater to your queries & after sales at all times. With our organized and widely spread Dealer network through out the country our dealers have always promoted **TOPPRO** equipments with confidence and service facility unmatched.

We undertake to continuously work for the up gradation of our Industry and set up **Quality, Commitment & Service** Standars for others to follow. We have transformed our working style to evolve as a market leader with distinct Identity. We appreciate your valuable suggestion & look forward to serving you with our products.



# OUR CLIENTS



P.A.U. LUDHIANA



KAPURTHALA



NIT JALANDHAR



PAP JALANDHAR



POLICE LINES  
FIROZPUR



POLICE LINES  
HOSHIARPUR



POLICE LINES  
AMRITSAR



BHADURGARH



INDIAN ARMY



BSF



KAPURTHALA



LUDHIANA



SHAHKOT



MUKTSAR SAHIB



NAKODAR



SRINAGAR



MALSIAN



MORINDA



SRINAGAR



BARNALA BUILDERS



SULTANPUR LODHI



HOSHIARPUR



DHARAMAKOT



FIROZPUR



GYMKHANA



JAMMU



JAMMU



JAMMU



RAIPUR



RAIPUR



RAIPUR



RAIPUR



RAIPUR



RAIPUR



Canara Bank



JAMMU



JAMMU



RAIPUR



PATHANKOT



EASTERN RAILWAY



STATE BANK OF INDIA



INDIAN RAILWAY



TATA



ONGC



S22 FITNESS



इंडियन ऑयल



RAIPUR



SRINAGAR



Union Bank of India



COUNTRY INN & SUITES ZIRAKPUR



HOPE FITNESS



paisabazaar.com



V16 GYM JAMMU



P & P FITNESS JAMMU



RAJPUT FITNESS RAIPUR



RAJPUT FITNESS DHAMTARI



Jullundur GYMKHANA



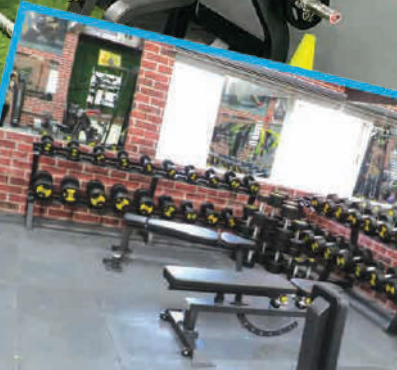
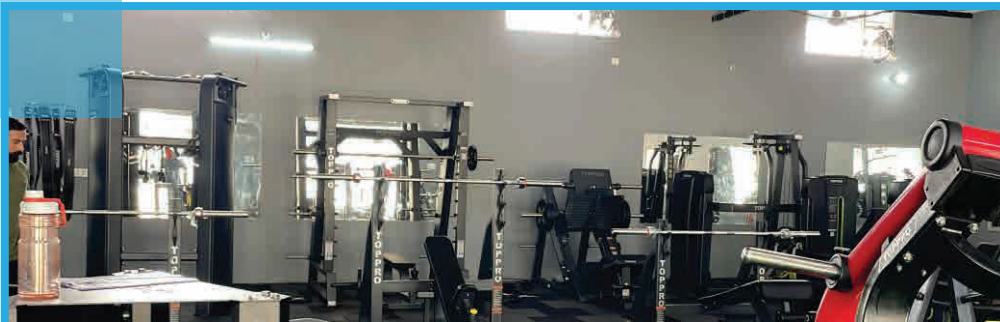
AKS FITNESS STUDIO JAMMU



HEALTH & WATCH

# TOPPRO

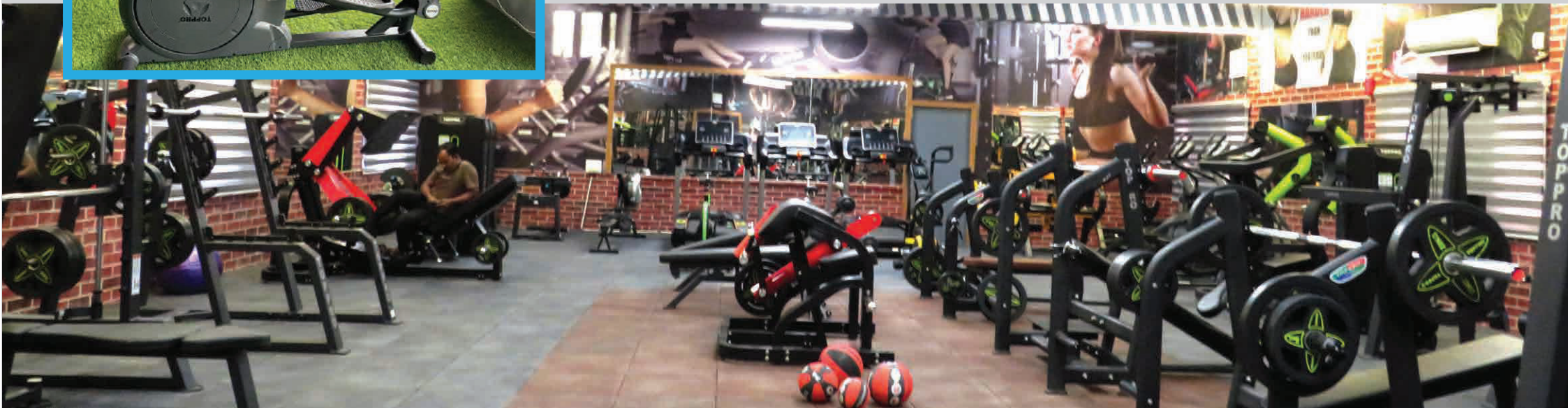
India's Premium Fitness Equipments Brand





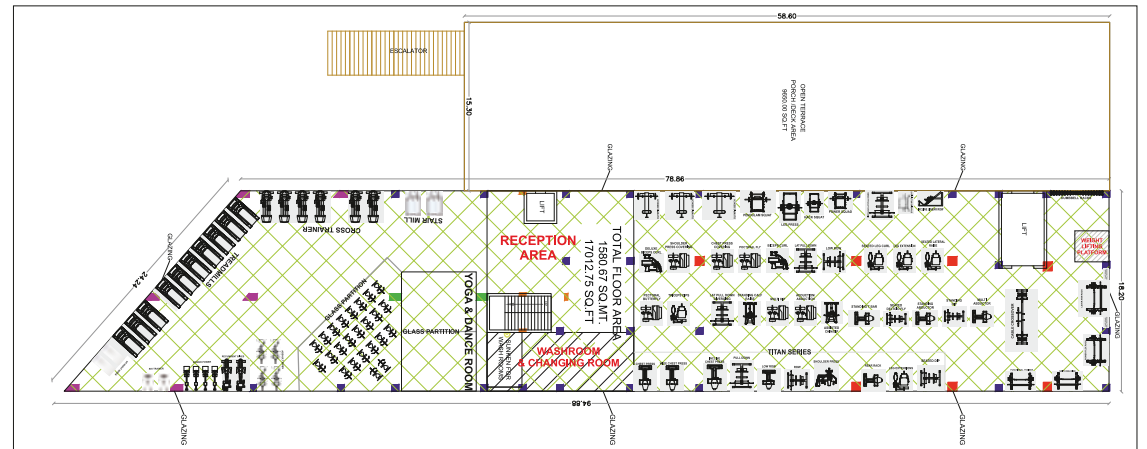
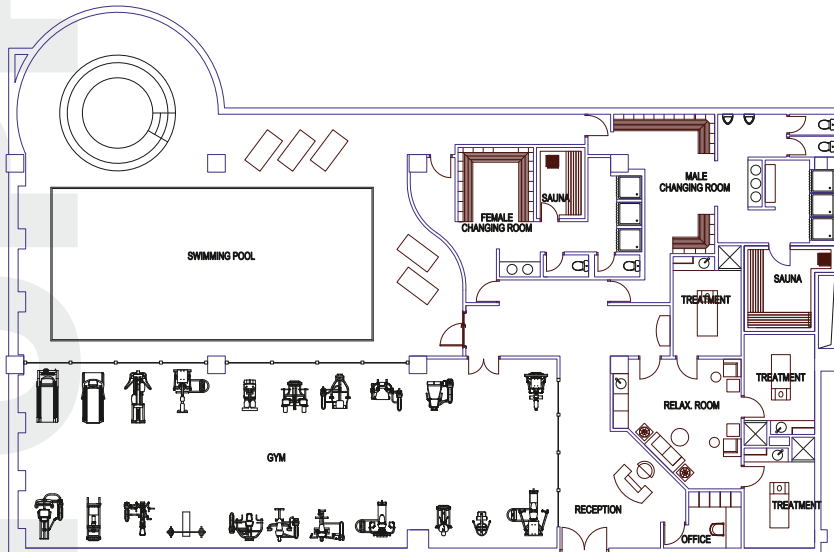
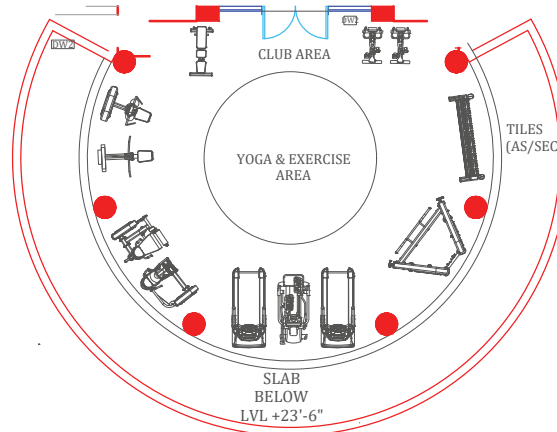
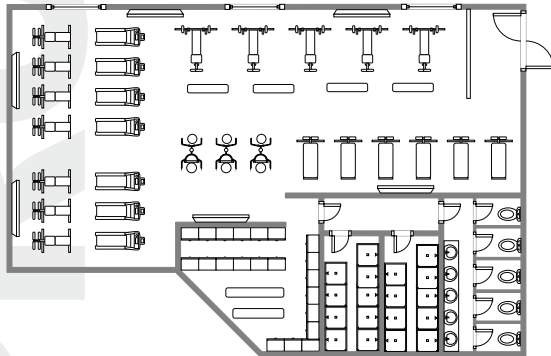
# TOPPRO®

India's Premium Fitness Equipments Brand



## WE DESIGN YOUR FITNESS PROJECT

We specialise not only in selling fitness equipments but also designing. The layout pattern for optimum & ergonomic placement. We strongly believe that space should be optically utilised & each equipment should be reasonably placed so as not to hamper individual movements. There should be reasonable clearance & free space for movement. Our core designing team help you optimise your interior keeping in view your investments. Qualified expertise, commitment & service support to adhere you for a successful venture.



# CONTENTS

## DOMESTIC SERIES

---

TREADMILL

MULTI FUNCTION MANUAL JOGGER

ELLIPTICAL BIKES

UPRIGHT BIKES

RECUMBENT BIKES

SPIN BIKES

ORBITRACK BIKE

AIR BIKE

HOME GYM

MASSAGER SERIES

BENCH SERIES

STEPPER & TWISTER SERIES

AB EXERCISE MACHINE

ROWING MACHINE

# TOPPRO®



## DOMESTIC TREADMILLS



# TOPPRO®

## MOTORISED TREADMILL DOMESTIC

# TP - 100



### SPECIFICATIONS

Motor Rating	: DC Motor 1.5 HP Continuous / 3.0 HP Peak
Speed Range	: 1 To 14 KMPH
Incline	: 3 Level Manual Adjustment
Programs	: P1 - P12, 12 Programs
Belt Size	: 16.5" (W) x 47" (L)
Display	: LCD
Console Feedback	: Speed, Time, Distance, Calories, Pulse
Set Up Area	: 64" (L) X 28" (W) X 43" (H)
Net Weight	: 43 Kgs.
Max. User Weight	: 100 Kgs
U.S.P.	: Safety Key • Ergonomic Design • Soft Stop
	• Air Cushion for Enhanced Knee Care
	• High Fidelity Speaker • Auxiliary Port
	• Self Lubricating Board • Soft Touch Buttons
	• Smart Folding System with Shocker
	• Wheels for Easy Transportation



WWW.TOPPROFITNESS.COM



CERTIFIED  
BY LPI TAIWAN



# TOPPRO

## MOTORISED TREADMILL DOMESTIC

# TP - 101



### SPECIFICATIONS

- Motor Rating : DC Motor 1.5 HP continuous / 3.0 HP Peak
- Speed Range : 1 - 14 KMPH
- Incline : 3 Levels Manual Adjustment
- Program : P1 - P12, 12 Program
- Belt Size : 17" (W) x 50" (L)
- Display : 4 Window LED Display
- Console Feedback : Speed / Time / Distance / Calories / Pulse
- Set Up Area : 64" (L) x 28" (W) x 43" (H)
- Net Weight : 49 Kgs
- Max. User Weight : 110 Kgs
- U.S.P. : Safty Key • Ergonomic Design • Soft Stop
- Air Cushion for Enhanced Knee Care
  - High Fidelity Speaker • Auxiliary Port
  - Self Lubricating Board • Soft Touch Buttons
  - Smart Folding System with Shocker
  - Wheels for Easy Transportation
  - Bluetooth Connectivity • SD Card



WWW.TOPPROFITNESS.COM



CERTIFIED  
BY LPI TAIWAN



# TOPPRO®

## MOTORISED TREADMILL DOMESTIC

# TP - 102



### SPECIFICATIONS

Motor Rating	: DC Motor 1.5 HP Continuous / 3.0 HP Peak
Speed Range	: 1 To 14 KMPH
Incline	: 3 Level Manual Adjustment
Programs	: P1 - P2, 12 Programs
Belt Size	: 17" (W) x 48" (L)
Display	: LCD
Console Feedback	: Speed, Time, Distance, Calories, Pulse
Set Up Area	: 64" (L) X 28" (W) X 43" (H)
Net Weight	: 47 Kgs.
Max. User Weight	: 110 Kgs.
U.S.P.	: Safety Key • Ergonomic Design • Soft Stop
	• Air Cushion for Enhanced Knee Care
	• High Fidelity Speaker • Auxiliary Port
	• Self Lubricating Board • Soft Touch Buttons
	• Smart Folding System with Shocker
	• Wheels for Easy Transportation



WWW.TOPPROFITNESS.COM



CERTIFIED  
BY LPI TAIWAN



# TOPPRO®

## MOTORISED TREADMILL DOMESTIC

# TP - 104



### SPECIFICATIONS

Motor Rating	: DC Motor 2.0 HP Continuous / 4.0 HP Peak
Speed Range	: 0.6 To 12 KMPH
Incline	: 3 Level Manual Adjustment
Programs	: P1- P9, 9 Programs
Belt Size	: 17" (W) x 52" (L)
Display	: LCD
Console Feedback	: Speed, Time, Distance, Calories, Pulse
Set Up Area	: 60" (L) X 30" (W) X 53" (H)
Net Weight	: 51.50 Kgs
Max. User Weight	: 115 Kgs
U.S.P.	: Safety Key • Ergonomic Design • Soft Stop
	• Air Cushion for Enhanced Knee Care
	• High Fidelity Speaker • Auxiliary Port
	• Self Lubricating Board • Soft Touch Buttons
	• Smart Folding System with Shocker
	• Wheels for Easy Transportation
	• Bluetooth Connectivity • SD Card



WWW.TOPPROFITNESS.COM



CERTIFIED  
BY LPI TAIWAN



WWW.TOPPROFITNESS.COM f TOPPROFITNESS @ TOPPROFITNESS

# TOPPRO®

## MOTORISED TREADMILL DOMESTIC

# TP - 106



### SPECIFICATIONS

Motor Rating	: DC Motor 1.5 HP Continuous / 3.0 HP Peak
Speed Range	: 1 To 14 KMPH
Incline	: 3 Level Manual Adjustment
Display	: 5" Blue Backlight
Programs	: P1- P9, 9 Programs
Belt Size	: 16.25" (W) x 50.5" (L)
Console Feedback	: Speed, Time, Distance, Calories, Pulse
Set Up Area	: 64" (L) x 28" (W) x 43" (H)
Net Weight	: 47 Kgs
Max. User Weight	: 100 Kgs
U.S.P.	: Safety Key • Ergonomic Design • Soft Stop
	• Air Cushion for Enhanced Knee Care
	• High Fidelity Speaker • Auxiliary Port
	• Self Lubricating Board • Soft Touch Buttons
	• Smart Folding System with Shocker
	• Wheels for Easy Transportation



WWW.TOPPROFITNESS.COM



CERTIFIED  
BY LPI TAIWAN



WWW.TOPPROFITNESS.COM f TOPPROFITNESS @ TOPPROFITNESS

# TOPPRO®



## MOTORISED TREADMILL | TP - 121 DOMESTIC

### SPECIFICATIONS

Motor Rating	:	DC Motor 1.5 HP Continuous / 3.0 HP Peak
Speed Range	:	0.8 To 12.00 KMPH
Incline	:	3 Level Manual Adjustment Incline
Display	:	LED Blue Back Light with Single Window Display
Programs	:	P1-P14, 14 Programs
Belt Size	:	16" (W) x 49" (L)
Console Feedback	:	Speed, Time, Distance, Calories, Pulse, Programs
Set Up Area	:	63" (L) x 28" (W) x 53" (H)
Net Weight	:	45 Kgs
Max. User Weight	:	100 Kgs
U.S.P.	:	Safety Key • Ergonomic Design • Soft Stop
		• Air Cushion for Enhanced Knee Care
		• High Fidelity Speaker • Auxiliary Port
		• Self Lubricating Board • Soft Touch Buttons
		• Smart Folding System with Shocker
		• Wheels for Easy Transportation



WWW.TOPPROFITNESS.COM



CERTIFIED  
BY LPI TAIWAN





## MOTORISED TREADMILL | *TP - 205 M*

### DOMESTIC SPECIFICATIONS

Motor Rating	:	DC Motor 2.0 HP Continuous / 4.0 HP Peak
Speed Range	:	1 To 16 KMPH
Incline	:	3 Level Manual Adjustment
Display	:	LED Blue Back Light with Single Window
Programs	:	P1 - P12, 12 Programs
Belt Size	:	17" (W) x 51" (L)
Console Feedback	:	Time, Distance, Calories, Pulse, Programs
Set Up Area	:	72" (L) x 29" (W) x 51" (H)
Net Weight	:	56 Kgs
Max. User Weight	:	110 Kgs
U.S.P.	:	Safety Key • Ergonomic Design • Soft Stop
		• Air Cushion for Enhanced Knee Care
		• High Fidelity Speaker • Auxiliary Port
		• Self Lubricating Board • Soft Touch Buttons
		• Smart Folding System with Shocker
		• Wheels for Easy Transportation
		• Twister & Stepper • Vibrator Massager



TP - 205 M

[WWW.TOPPROFITNESS.COM](http://WWW.TOPPROFITNESS.COM)



CERTIFIED BY LPI TAIWAN



# TOPPRO®



## MOTORISED TREADMILL DOMESTIC

# TP - 231 M

MULTI FUNCTIONAL TREADMILL WITH STEPPER, TWISTER AND MASSAGER

### SPECIFICATIONS

Motor Rating	:	DC Motor 1.5 HP Continuous / 3.0 HP Peak
Speed Range	:	0.8 To 12.00 KMPH
Incline	:	3 Level Manual Adjustment
Display	:	Large LCD Blue Display
Programs	:	P1-P12, 12 Programs
Belt Size	:	16" (W) x 48" (L)
Console Feedback	:	Speed, Time, Distance, Calories, Pulse
Set Up Area	:	74" (L) x 29" (W) x 52" (H)
Net Weight	:	54 Kgs
Max. User Weight	:	100 Kgs
U.S.P.	:	<ul style="list-style-type: none"><li>Safety Key • Ergonomic Design • Soft Stop</li><li>Air Cushion for Enhanced Knee Care</li><li>High Fidelity Speaker • Auxiliary Port</li><li>Self Lubricating Board • Soft Touch Buttons</li><li>Smart Folding System with Shocker</li><li>Wheels for Easy Transportation</li><li>Twister &amp; Stepper • Vibrator Massager</li></ul>



TP - 231 M

[WWW.TOPPROFITNESS.COM](http://WWW.TOPPROFITNESS.COM)



CERTIFIED  
BY LPI TAIWAN



WWW.TOPPROFITNESS.COM f TOPPROFITNESS @ TOPPROFITNESS

# TOPPRO®

## MOTORISED TREADMILL DOMESTIC

# TP - 900



### SPECIFICATIONS

Motor Rating	:	DC Motor 1.5 HP Continuous / 3.0 HP Peak
Speed Range	:	1 To 14 KMPH
Incline	:	Auto Incline 1 to 15%
Programs	:	P1-P12, 12 Programs
Belt Size	:	17" (W) x 48" (L)
Console Feedback	:	Speed, Time, Distance, Calories, Pulse
Set Up Area	:	64" (L) X 28" (W) X 43" (H)
Net Weight	:	53 Kgs.
Max. User Weight	:	115 Kgs.
U.S.P.	:	Safety Key • Ergonomic Design • Soft Stop
		• Air Cushion for Enhanced Knee Care
		• High Fidelity Speaker • Auxiliary Port
		• Self Lubricating Board • Soft Touch Buttons
		• Smart Folding System with Shocker
		• Wheels for Easy Transportation



TP - 900

[WWW.TOPPROFITNESS.COM](http://WWW.TOPPROFITNESS.COM)



CERTIFIED  
BY LPI TAIWAN





## MOTORISED TREADMILL | *TP - 910*

### DOMESTIC SPECIFICATIONS

- Motor Rating : DC Motor 2.5 HP Continuous / 5.0 HP Peak
- Speed Range : 1 To 16 KMPH
- Incline : Auto Incline 0~15%
- Display : 5"-LCD Screen Blue backlight
- Programs : P1-P12, 12 Programs
- Belt Size : 17.5" (W) x 54" (L)
- Console Feedback : Speed, Time, Distance, Calories, Pulse, Heart Rate
- Set Up Area : 67" (L) X 35" (W) X 55" (H)
- Net Weight : 62 Kgs
- Max. User Weight : 120 Kgs
- U.S.P. :
  - Safety Key • Ergonomic Design • Soft Stop
  - Air Cushion for Enhanced Knee Care
  - High Fidelity Speaker • Auxiliary Port
  - Self Lubricating Board • Soft Touch Buttons
  - Smart Folding System with Shocker
  - Wheels for Easy Transportation
  - Bluetooth Connectivity • SD Card



TP - 910

WWW.TOPPROFITNESS.COM



CERTIFIED BY LPI TAIWAN



# TOPPRO



## MOTORISED TREADMILL | TP - 911 DOMESTIC

### SPECIFICATIONS

Motor Rating	: DC Motor 2.5 HP Continuous / 5.0 HP Peak
Speed Range	: 1 To 18 KMPH
Incline	: Auto Incline 0%~15%
Display	: 4 Window LED Display
Programs	: P1-P64, 64 Program
Belt Size	: 19.2" (W) x 56" (L)
Console Feedback	: Speed, Time, Distance, Calories, Pulse, Heart Rate
Set Up Area	: 67" (L) X 35" (W) X 55" (H)
Net Weight	: 73 Kgs
Max. User Weight	: 130 Kgs.
U.S.P.	: <ul style="list-style-type: none"><li>• Safty Key • Ergonomic Design • Soft Stop</li><li>• Air Cushion for Enhanced Knee Care</li><li>• High Fidelity Speaker</li><li>• Self Lubricating Board • Soft Touch Buttons</li><li>• Smart Folding System with Shocker</li><li>• Wheels for Easy Transportation</li><li>• Bluetooth Connectivity</li></ul>



WWW.TOPPROFITNESS.COM



CERTIFIED  
BY LPI TAIWAN



# TOPPRO®



## MOTORISED TREADMILL DOMESTIC

# TP - 912

### TFT SCREEN

### SPECIFICATIONS

- Motor Rating : DC Motor 2.5 HP Continuous / 5.0 HP Peak
- Speed Range : 1 To 16 KMPH
- Incline : Auto Incline 0%~15%
- Display : 7" TFT Touch Screen
- Belt Size : 17" (W) x 52" (L)
- Console Feedback : Speed, Time, Distance, Calories, Pulse, Heart Rate
- Set Up Area : 67" (L) X 35" (W) X 55" (H)
- Net Weight : 62 Kgs
- Max. User Weight : 125 Kgs
- U.S.P. :
  - Safety Key • Ergonomic Design • Soft Stop
  - Air Cushion for Enhanced Knee Care
  - High Fidelity Speaker • Auxiliary Port
  - Self Lubricating Board • Soft Touch Buttons
  - Smart Folding System with Shocker
  - Wheels for Easy Transportation
  - Bluetooth Connectivity • SD Card



# TP - 912

WWW.TOPPROFITNESS.COM



CERTIFIED BY LPI TAIWAN



# TOPPRO®



## MOTORISED TREADMILL | *TP - 1001* DOMESTIC

### SPECIFICATIONS

Motor Rating	: AC Motor 1.5 HP Continuous / 3.0 HP Peak
Speed Range	: 1 To 16 KMPH
Incline	: Manual
Programs	: 8 Programs (P1 - P8), Manual
Belt Size	: 17" (W) x 50" (L)
Display	: LCD with Single window Display
Console Feedback	: Speed, Time, Distance, Calories, Pulse, Program
Set Up Area	: 67" (L) X 30" (W) X 53" (H)
Net Weight	: 63 Kgs.
Max. User Weight	: 120 kgs.
U.S.P.	: Magnetic Safety Key -6 Spring Cushion • Ergonomic Design • Soft Stop
	• In Built Speaker for MP3 Player
	• Bluetooth Connectivity
	• Self Lubricant Deck
	• Quick Speed Buttons
	• Ortho Belt



TP - 1001

[WWW.TOPPROFITNESS.COM](http://WWW.TOPPROFITNESS.COM)



CERTIFIED BY LPI TAIWAN



# TOPPRO

## MOTORISED TREADMILL DOMESTIC

# TP - 1002



### SPECIFICATIONS

Motor Rating	: AC Motor 2.0 HP Continuous / 4.0 HP Peak
Speed Range	: 1 To 16 KMPH
Incline	: Manual
Programs	: 8 Programs (P1 - P8), Manual
Belt Size	: 18" (W) x 54" (L)
Display	: LCD with Single window Display
Console Feedback	: Speed, Time, Distance, Calories, Pulse, Program
Set Up Area	: 67" (L) X 30" (W) X 53" (H)
Net Weight	: 63 Kgs.
Max. User Weight	: 120kgs.
U.S.P.	: <ul style="list-style-type: none"><li>• IMagnetic Safety Key -6 Spring Cushion</li><li>• Ergonomic Design</li><li>• Soft Stop • In Built Speaker for MP3 Player</li><li>• Bluetooth Connectivity</li><li>• Self Lubricant Deck</li><li>• Quick Speed Buttons</li><li>• Ortho Belt</li></ul>



TP - 1002

[WWW.TOPPROFITNESS.COM](http://WWW.TOPPROFITNESS.COM)



CERTIFIED  
BY LPI TAIWAN



# TOPPRO®



## MOTORISED TREADMILL | *TP - 1003* DOMESTIC

### SPECIFICATIONS

Motor Rating	: AC Motor 2.0 HP Continuous / 4.0 HP Peak
Speed Range	: 1 To 16 KMPH
Incline	: Manual
Programs	: 8 Programs (P1 - P8), Manual
Belt Size	: 18" (W) x 54" (L)
Display	: LCD with Single window Display
Console Feedback	: Speed, Time, Distance, Calories, Pulse, Program
Set Up Area	: 67" (L) X 30" (W) X 53" (H)
Net Weight	: 63 Kgs.
Max. User Weight	: 120kgs.
U.S.P.	: In Built Speaker for MP3 Player
	• Bluetooth Connectivity
	• Magnetic Safety Key -6 Spring Cushion
	• Ergonomic Design
	• Self Lubricant Deck
	• Quick Speed Buttons
	• Soft Stop • Ortho Belt



TP - 1003

[WWW.TOPPROFITNESS.COM](http://WWW.TOPPROFITNESS.COM)



CERTIFIED BY LPI TAIWAN



# TOPPRO®



## MOTORISED TREADMILL LIGHT COMMERCIAL

# TP - 1010

### SPECIFICATIONS

Motor Rating	:	AC Motor 2.5 HP Continuous / 4.0HP Peak
Speed Range	:	1 To 16 KMPH
Incline	:	0% to 15% Automatic
Programs	:	8 Programs (P1-P8), Manual
Belt Size	:	18" (W) x 51" (L)
Display	:	LCD with Single window Display
Console Feedback	:	Speed, Time, Distance, Calories, Pulse, Program
Set Up Area	:	67" (L) x 30" (W) x 53" (H)
Net Weight	:	63 Kgs.
Max. User Weight	:	110 Kgs.
U.S.P.	:	In built Speaker for MP3 Player
	•	Magnetic Safety Key
	•	6 Spring Cushion
	•	Ergonomic Design
	•	Self Lubricant Deck
	•	Soft Stop • Ortho Belt



# TP - 1010

[WWW.TOPPROFITNESS.COM](http://WWW.TOPPROFITNESS.COM)



CERTIFIED  
BY LPI TAIWAN



# TOPPRO®



## MOTORISED TREADMILL LIGHT COMMERCIAL

# TP - 1012

### SPECIFICATIONS

Motor Rating	: AC Motor 2.5 HP Continuous / 5.0HP Peak
Speed Range	: 1 To 18 KMPH
Incline	: 0% to 15% Automatic
Programs	: 9 Programs, (01-09) 8 Presets, 1 Fat and 1 Manual
Belt Size	: 19" (W) x 56" (L)
Display	: 5" LCD with Single window Display
Console Feedback	: Speed, Time, Distance, Calories, Pulse, Program
Set Up Area	: 70" (L) x 32" (W) x 51" (H)
Net Weight	: 72Kgs
Max. User Weight	: 130 Kgs
U.S.P.	: In built Speaker for Mp3 / USB / SD Card • Magnetic Safety Key 6 Spring Cushion



TP - 1012

[WWW.TOPPROFITNESS.COM](http://WWW.TOPPROFITNESS.COM)



CERTIFIED  
BY LPI TAIWAN



# TOPPRO®



## MOTORISED TREADMILL LIGHT COMMERCIAL

# TP - 1013

### SPECIFICATIONS

Motor Rating	: AC Motor 2.5 HP Continuous / 5.0 HP Peak
Speed Range	: 1 To 18 KMPH
Incline	: 0% to 15% Automatic
Programs	: Programs, Body Fat. 64 Programs, 1 Manual
Belt Size	: 19" (W) x 55" (L)
Display	: LCD Blue Back Light, Single Window Display
Console Feedback	: Speed, Time, Distance, Calories, Pulse, Program
Set Up Area	: 73" (L) x 30" (W) x 53" (H)
Net Weight	: 71 Kgs.
Max. User Weight	: 130 Kgs.
U.S.P.	: In built Speaker for MP3 Player, <ul style="list-style-type: none"><li>• 6 Regular Rubber Cushion</li><li>• Magnetic Safety Key</li><li>• 6 Cushion Shock Absorbers</li><li>• Shock Proof Deck System</li><li>• Soft Stop</li><li>• Ortho Belt • Self Lubricant Deck</li></ul>



TP - 1013

[WWW.TOPPROFITNESS.COM](http://WWW.TOPPROFITNESS.COM)



CERTIFIED  
BY LPI TAIWAN



# ≡TOPPRO≡

## MULTI FUNCTION MANUAL JOGGER

**5 IN ONE**



# TOPPRO®

## MANUAL TREADMILL | *TP - 6000*

### SPECIFICATIONS

Dimension	: 76"(L) x 26"(W) x 59"(H)
Elevation	: 2 Levels, manual
Belt Size	: 46" (L) x 13" (W)
Display	: LCD five window display
Display Feedback	: Pulse, time, distance, speed and calories
Mode/Set Option	: Time, distance and calorie can be manually set as per user requirement
Heart Rate Technology	: Heart rate control with hand grip pulse sensor
Multi Work Out	: Additional stepper, twister and push up bar are provided
Frame	: Heavy-gauge welded steel with textured proprietary two coat electro statically powder process finish to ensure maximum corrosion & chip resistance
Fold able	: Smart folding system
Max User Weight	: 100 Kgs



WWW.TOPPROFITNESS.COM



**TOPPRO®**

**ELLIPTICAL  
BIKE**

GERMAN DESIGN  
CERTIFIED ISO-9001 QUALITY  
CERTIFIED BY LPI TAIWAN  
LIFETIME WARRANTY FRAME

[WWW.TOPPROFITNESS.COM](http://WWW.TOPPROFITNESS.COM)  TOPPROFITNESS  TOPPROFITNESS

# TOPPRO®

TP-670 EL



## DOMESTIC ELLIPTICAL BIKE

### TP-670 EL

#### SPECIFICATIONS

Dimension	: 45" (L) x 25" (W) x 66" (H)
Strides	: 15" Natural stride
Resistance	: 08 Levels
Power	: 02 AA Size batteries
Resistance System	: Manual magnetic resistance
Drive System	: Centre design drive, super silent poly-v belt driven
Fly Wheel	: 6 Kgs precision balanced
Pedals	: Self balancing, close spacing, enlarge and impact absorbing, fit to any size user
Centre of Gravity	: Low COG Combined with a balanced frame prevents rocking
Cardio Monitor	: In-built pulse sensor with front handle grips enables to the cardio monitoring on board
Display	: LCD Computerized Console
Display Feedback	: Multi feedback read out instantly Time, Distance, Calories, Speed, Odo & Scan
Mode/Set Option	: Time, distance, calories and temperature can be set as per user requirements
Transportation	: Transportation wheel for easy movement
Frame Structure	: Arched support frame for maximum durability and stability
Frame Finishing	: Proprietary two coat powder process
Crank	: 3 Piece Assembly
Net Weight	: 37 Kgs
User Weight	: 100 Kgs



# TOPPRO®

TP-770 EL



## DOMESTIC ELLIPTICAL BIKE

### TP-770 EL

#### SPECIFICATIONS

Dimension	: 52" (L) x 28" (W) x 63"(H)
Strides	: 18" Natural stride
Resistance	: 08 Levels
Power	: 02 AA Size batteries
Resistance System	: Manual magnetic resistance
Drive System	: Centre design drive, super silent poly-v belt driven
Fly Wheel	: 6 Kgs precision balanced
Pedals	: Self balancing, close spacing, enlarge and impact absorbing, fit to any size user
Centre of Gravity	: Low COG Combined with a balanced frame prevents rocking
Cardio Monitor	: In-built pulse sensor with front handle grips enables to the cardio monitoring on board
Display	: LCD Computerized Console
Display Feedback	: Multi feedback read out instantly Displays Time, Distance, Distance, Calories, Speed ODO & Scan
Mode/Set Option	: Distance, Calories, Speed ODO and Scan can be set as per user requirements
Transportation	: Transportation wheel for easy movement
Frame Stucture	: Arched support frame for maximum durability and stability.
Frame Finishing	: Proprietary two coat powder process
Crank	: 3 Piece Assembly
Net Weight	: 44 Kgs
User Weight	: 110 Kgs



# TOPPRO®

## LIGHT COMMERCIAL ELLIPTICAL BIKE

### TP-870 EL

#### SPECIFICATIONS

Dimension	: 56" (L) x 23" (W) x 68"(H)
Stride	: 400mm
Resistance	: 08 Levels
Power	: 02 AA Size batteries
Resistance System	: Manual magnetic resistance
Drive System	: Centre design drive, super silent poly-v belt driven
Fly Wheel	: 9 Kgs precision balanced
Pedals	: Self balancing, close spacing, enlarge and impact absorbing, fit to any size user
Centre of Gravity	: Low COG Combined with a balanced frame prevents rocking
Cardio Monitor	: In-built pulse sensor with front handle grips enables to the cardio monitoring on board
Display	: LCD Computerized Console
Display Feedback	: Multi feedback read out instantly Displays Time, Distance, RPM, Calories and Pulse
Mode/Set Option	: Time, distance and calories can be set as per user requirements
Transportation	: Transportation wheel for easy movement
Frame Structure	: Arched support frame for maximum durability and stability
Frame Finishing	: Proprietary two coat powder process
Crank	: 3 Piece Assembly
Net Weight	: 51.2 Kgs
User Weight	: 120 Kgs



TP-870 EL



# TOPPRO®

## LIGHT COMMERCIAL ELLIPTICAL BIKE

### TP-875 EL

#### SPECIFICATIONS

Dimensions	:	67"(L) x 26"(W) x 63"(H)
Stride	:	18" natural stride
Resistance	:	15 Level
Resistance System	:	EMS System Electronic Control
Power	:	1.5 Volt x 2.AAA size battery
Fly Wheel	:	9 kgs Precision Balanced
Pedals	:	Self balancing, close spacing, enlarge and impact absorbing, fit to any size user
Centre of Gravity	:	Low COG Combined with a balanced frame prevents rocking
Cardio Monitor	:	In-built pulse sensor with front handle grips enables to the cardio monitoring on board
Display	:	LCD Computerized Console
Display Feedback	:	Multi feedback read out instantly Displays Time, Distance, RPM, Calories and Pulse
Mode/Set Option	:	Time, distance and calories can be set as per user requirements
Transportation	:	Transportation wheel for easy movement
Frame Structure	:	Arched support frame for maximum durability and stability
Frame Finishing	:	Proprietary two coat powder process
Crank	:	3 Piece Assembly
Net Weight	:	54 Kgs
User Weight	:	135 Kgs

TP-875 EL



**TOPPRO®**

# ELLIPTICAL AND UPRIGHT BIKE



[WWW.TOPPROFITNESS.COM](http://WWW.TOPPROFITNESS.COM)  [TOPPROFITNESS](https://www.facebook.com/topprofitness)  [TOPPROFITNESS](https://www.instagram.com/topprofitness)

# TOPPRO®



TP-840 EU



## DOMESTIC ELLIPTICAL & UPRIGHT BIKE

### TP-840 EU

#### SPECIFICATIONS

Dimension	: 52" (L) X 27"(W) X 66"(H)
Strides	: 14" Inches natural strides
Resistance Level	: 8 Levels
Resistance System:	: Manual resistance
Drive System	: Centre design drive, super silent poly-V belt driven
Fly Wheel	: 7 Kgs precision balanced
USP	
Transportation	: Transportation wheel for easy movement
Pedals	: Self balancing, close spacing, enlarge, impact-absorbing and fit to any size user
Seat	: Pop-pin seat slider horizontal and 6 steps vertical adjustments deliver a great fit
Centre of Gravity	: Low COG combined with a balanced frame prevents rocking
Cardio Monitor	: In-built pulse sensor with front handle grips enables to the cardio monitoring on board
Display	: LCD, computerized console
Display Feedback	: Multi feedback read out instantly displays time, distance, speed, calories, odo and pulse
User Weight	: 120 Kgs
Net Weight	: 47.5 Kgs
Rating	: Domestic
Frame Structure	: Arched support frame for maximum durability and stability
Frame Finishing	: Proprietary two coat powder process
Rust Proof	: All frame structures electro statically powder coated to ensure maximum corrosion and training of the best forms of cardiovascular and colliptical chess pain monitor cardio workouts



# TOPPRO®



TP-880 EU



## LIGHT COMMERCIAL ELLIPTICAL & UPRIGHT BIKE

### TP-880 EU

#### SPECIFICATIONS

Set Up Area	: 60" (L) X 26" (W) X 69"(H)
Strides	: 16" Inches natural strides
Resistance Level	: 8 Levels
Resistance System	: Manual magnetic resistance
Drive System	: Centre design drive, super silent poly-V belt driven
Fly Wheel	: 7 Kgs precision balanced
Cardio Monitor	: In-built pulse sensor with front handle grips enables to the cardio monitoring on board
Display	: LCD, Computerized console
Display Feedback	: Multi feedback read out instantly displays time, distance, speed, calories, odo and pulse
User Weight	: 120 Kgs
Net Weight	: 48.5 Kgs
Transportation	: Transportation wheel for easy movement
Rating	: Semi-Domestic
USP	
Pedals	: Self balancing, close spacing, enlarge, impact-absorbing and fit to any size user
Seat	: Pop-pin seat slider horizontal and 6 steps vertical adjustments deliver a great fit
Centre of Gravity	: Low COG combined with a balanced frame prevents rocking
Frame Structure	: Arched support frame for maximum durability and stability
Frame Finishing	: Proprietary two coat powder process
Rust Proof	: All frame structures electro statically powder coated to ensure maximum corrosion and chip resistance. Elliptical cross trainers offer one of the best forms of cardiovascular training onboard computers help plan monitor cardio workouts



**TOPPRO®**

# RECUMBENT BIKE



[WWW.TOPPROFITNESS.COM](http://WWW.TOPPROFITNESS.COM)  [TOPPROFITNESS](#)  [TOPPROFITNESS](#)

# RECUMBENT BIKE

## TP-630R



TP-630 R



DOMESTIC

# TOPPRO®

### SPECIFICATIONS

Set Up Area	:	51" (L) x 24" (W) x 39" (H)
Resistance Level	:	8 Levels, Friction-Free Magnetic Resistance
Power	:	1.5Volt X 2, AA Size Battery
Fly Wheel	:	5 Kgs Precision Balanced
Drive System	:	Centre Design Drive, Super Silent Poly-V Belt Driven
Pedals	:	Self balanced extra wide paddles with adjustable straps fit to any size user and provides gentle movements
Seat	:	Ergonomically designed comfortable seat with flex back cushion contoured for lumbar support with horizontal 10 levels adjustment
Handle Bars	:	Side handle bar with contact heart rate sensor and U bar style front handle
Display	:	LCD display single window computerized console
Display Feedback	:	Multi feedback read out instantly displays time, speed, distance, calories, pulse, odo and scan
Frame	:	Heavy gauge steel construction with Premium textured powder coating
User Weight	:	100 Kgs
Crank Assembly	:	3 Pieces Crank Assembly
Frame Structure	:	Extra sturdy and stable steel frame construction durability and stability
Frame Finishing	:	Extra sturdy and stable steel frame construction for maximum durability and stability, proprietary two coat powder process
Rust Proof	:	All frame structures electro statically powder



[WWW.TOPPROFITNESS.COM](http://WWW.TOPPROFITNESS.COM)

[TOPPROFITNESS](https://www.facebook.com/topprofitfitness)

[TOPPROFITNESS](https://www.instagram.com/topprofitfitness)

# RECUMBENT BIKE

LIGHT COMMERCIAL

# TOPPRO®

## TP-865R



TP-865R



### SPECIFICATIONS

Set Up Area	:	65.5" (L) x 27" (W) x 42" (H)
Resistance Level	:	8 Levels, Friction-Free Magnetic Resistance
Power	:	1.5Volt X 2, AA Size Battery
Fly Wheel	:	5 Kgs Precision Balanced
Drive System	:	Centre Design Drive, Super Silent Poly-V Belt Driven
Pedals	:	Self balanced extra wide paddles with adjustable straps fit to any size user and provides gentle movements
Seat	:	Ergonomically designed comfortable seat with flex back cushion contoured for lumbar support with horizontal 10 levels adjustment
Handle Bars	:	Side handle bar with contact heart rate sensor and U bar style front handle
Display	:	LCD display single window computerized console
Display Feedback	:	Multi feedback read out instantly displays time, speed, distance, calories, pulse, odo and scan
Frame	:	Heavy gauge steel construction with Premium textured powder coating
User Weight	:	120 Kgs
Net Weight	:	42.5 Kgs
Crank Assembly	:	3 Pieces Crank Assembly
Frame Structure	:	Extra sturdy and stable steel frame construction durability and stability
Frame Finishing	:	Extra sturdy and stable steel frame construction for maximum durability and stability, proprietary two coat powder process
Rust Proof	:	All frame structures electro statically powder



[WWW.TOPPROFITNESS.COM](http://WWW.TOPPROFITNESS.COM)

[TOPPROFITNESS](https://www.facebook.com/topprofitfitness)

[TOPPROFITNESS](https://www.instagram.com/topprofitfitness)

# RECUMBENT BIKE

LIGHT COMMERCIAL

# TOPPRO®

## TP-870R

TP-870R



### SPECIFICATIONS

Set Up Area	:	69" (L) x 27" (W) x 42" (H)
Resistance Level	:	8 Levels, Friction Free Magnetic Resistance
Drive System	:	Centre Design Drive, Super Silent Poly-V Belt Driven
Pedals	:	Self Balanced Extra Wide Paddles With Adjustable Straps Fit To Any Size User
Seat	:	Ergonomically Designed Comfortable Seat With Nylon Net Back Contoured For Lumbar Support With Horizontal Slide Adjustment
Handle Bars	:	Side Handle Bar With Contact Heart Rate Sensor And U Bar Style Front Handle
Display	:	LCD Display, Single Window Computerized Console
Display Feedback	:	Multi Feedback Read Out Instantly Displays Time, Speed, Distance, Calories And Pulse
Crank Assembly	:	3 Pieces Crank Assembly
Frame Structure	:	Extra Sturdy And Stable Steel Frame Construction Durability And Stability
Frame Finishing	:	Extra Sturdy And Stable Steel Frame Construction For Maximum Durability And Stability, Proprietary Two Coat Powder Process
Fly Wheel	:	9 Kgs Precision Balance
User Weight	:	120 Kgs
Net Weight	:	47.1 Kgs



[WWW.TOPPROFITNESS.COM](http://WWW.TOPPROFITNESS.COM)

[TOPPROFITNESS](https://www.facebook.com/topprofitfitness)

[TOPPROFITNESS](https://www.instagram.com/topprofitfitness)

**TOPPRO®**

# UPRIGHT BIKE



[WWW.TOPPROFITNESS.COM](http://WWW.TOPPROFITNESS.COM)  [TOPPROFITNESS](https://www.facebook.com/topprofitness)  [TOPPROFITNESS](https://www.instagram.com/topprofitness)

# UPRIGHT BIKE

DOMESTIC

# TOPPRO®

## TP-350U

### SPECIFICATIONS

- Dimension** : 28"(L) x 23"(W) x 48"(H)
- Resistance** : 8 Levels Manual
- Resistance System** : Friction free magnetic resistance
- Fly Wheel** : 5 Kgs, precision balanced
- Drive System** : Centre design drive, super silent poly-V belt driven
- Pedals** : Self balanced extra wide paddles with adjustable straps
- Seat** : Ergonomically designed comfortable seat
- Seat Adjustment** : 8 Levels vertical seat adjustment
- Handle Bars** : U-Bar Style, in built contact heart rate sensor with hand grips
- Display** : LCD
- Display Feedback** : Multi feedback readout display Time, Speed, Distance, Odo, Pulse & Calories
- Net Weight** : 20 Kgs
- User Weight** : 105 Kgs
- Crank** : Single Piece crank assembly
- U.S.P.** : Extra sturdy & stable steel frame construction durable & stable
- Proprietary two coat electro statically powder coated
  - Rust proof



# TP-350U



# UPRIGHT BIKE

DOMESTIC

# TOPPRO®

## TP-560U

### SPECIFICATIONS

- Dimension** : 34"(L) x 18"(W) x 50"(H)
- Resistance** : 8 Levels Manual
- Resistance System** : Friction free magnetic resistance
- Fly Wheel** : 5 Kgs, precision balanced
- Drive System** : Centre design drive, super silent poly-V belt driven
- Pedals** : Self balanced extra wide paddles with adjustable straps
- Seat** : Ergonomically designed comfortable seat
- Seat Adjustment** : 8 Levels vertical & horizontal seat adjustment
- Handle Bars** : U-Bar Style, in built contact heart rate sensor with hand grips
- Display** : LCD
- Display Feedback** : Large display Computer Time, Speed, Distance, Scan, Pulse & Calories
- Net Weight** : 22 Kgs
- User Weight** : 105 Kgs
- Crank** : Single Piece crank assembly with 2 way bearing
- U.S.P.** : Extra sturdy & stable steel frame construction durable & stable
- Proprietary two coat electro statically powder coated
  - Rust proof



# TP-560U



# UPRIGHT BIKE

DOMESTIC

# TOPPRO®

## TP-600U

### SPECIFICATIONS

- Dimension** : 45" (L) x 23" (H) x 54" (H)
- Resistance** : 8 Levels Manual
- Resistance System** : Friction free magnetic resistance
- Fly Wheel** : 5 Kgs, precision balanced
- Drive System** : Centre design drive, super silent poly-V belt driven
- Pedals** : Self balanced extra wide paddles with adjustable straps
- Seat** : Ergonomically designed comfortable seat with back rest support
- Seat Adjustment** : 8 Levels vertical seat adjustment
- Handle Bars** : U-Bar Style, in built contact heart rate sensor with hand grips
- Display** : LCD
- Display Feedback** : Multi feedback readout display Time, Speed, Distance, Odo, Pulse & Calories
- Net Weight** : 27 Kgs
- User Weight** : 100 Kgs
- Crank** : Single Piece crank assembly
- U.S.P.** :
- Extra sturdy & stable steel frame construction durable & stable
  - Proprietary two coat electro statically powder coated to ensure minimum corrosion & chip resistance
  - Rust proof



# TP-600U



# UPRIGHT BIKE

DOMESTIC

# TOPPRO®

## TP-610U

### SPECIFICATIONS

<b>Dimension</b>	: 36"(L) x 23"(H) x 54"(H)
<b>Resistance</b>	: 8 Levels Manual
<b>Resistance System</b>	: Friction free magnetic resistance
<b>Fly Wheel</b>	: 5 Kgs, precision balanced
<b>Drive System</b>	: Centre design drive, super silent poly-V belt driven
<b>Pedals</b>	: Self balanced extra wide paddles with adjustable straps
<b>Seat</b>	: Ergonomically designed comfortable seat with back rest support
<b>Seat Adjustment</b>	: 8 Levels vertical seat adjustment
<b>Handle Bars</b>	: U-Bar Style, in built contact heart rate sensor with hand grips
<b>Display</b>	: LCD
<b>Display Feedback</b>	: Multi feedback readout display Scan, Time, Speed, Distance, Odo Pulse & Calories
<b>Net Weight</b>	: 30 Kgs
<b>User Weight</b>	: 100 Kgs
<b>Crank</b>	: 3 Piece crank assembly
<b>Handle Adjustment</b>	: Yes
<b>U.S.P.</b>	: Extra sturdy & stable steel frame construction durable & stable : Proprietary two coat electro statically powder coated to ensure minimum • corrosion & chip resistance • Rust proof



# TP-610U



# UPRIGHT BIKE

DOMESTIC

# TOPPRO®

## TP-620U

### SPECIFICATIONS

- Dimension** : 45"(L) x 19"(H) x 54"(H)
- Resistance** : 1-9 Levels
- Resistance System** : Electro Magnetic Resistance
- Fly Wheel** : 5 Kgs, precision balanced
- Drive System** : Centre design drive, super silent poly-V belt driven
- Pedals** : Self balanced extra wide paddles with adjustable straps
- Seat** : Ergonomically designed comfortable seat
- Seat Adjustment** : 8 Levels vertical seat adjustment
- Handle Bars** : U-Bar Style, in built contact heart rate sensor with hand grips
- Display** : LCD
- Display Feedback** : Multi feedback readout display Scan, Time, Speed, Distance, Odo Pulse & Calories
- Net Weight** : 27 Kgs
- User Weight** : 100 Kgs
- Crank** : Single piece crank assembly
- U.S.P.** :
- Extra sturdy & stable steel frame construction durable & stable
  - Proprietary two coat electro statically powder coated to ensure minimum corrosion & chip resistance
  - Rust proof



# TP-620U



WWW.TOPPROFITNESS.COM  TOPPROFITNESS  TOPPROFITNESS

# UPRIGHT BIKE

DOMESTIC

**TOPPRO®**

**TP-630U**

## SPECIFICATIONS

- Dimension** : 36"(L) x 20"(H) x 54"(H)
- Resistance** : 8 Levels Manual
- Resistance System** : Friction free magnetic resistance
- Fly Wheel** : 7 Kgs, precision balanced
- Drive System** : Super silent poly-V belt driven
- Pedals** : Self balanced extra wide paddles with adjustable straps
- Seat** : Ergonomically designed comfortable seat
- Seat Adjustment** : 9 Levels vertical seat adjustment
- Handle Bars** : U-Bar Style, in built contact heart rate sensor with hand grips
- Display** : LCD
- Display Feedback** : Multi feedback readout display Scan, Time, Speed, Distance, Odo Pulse & Calories
- Net Weight** : 26 Kgs
- User Weight** : 100 Kgs
- Crank** : Single piece crank assembly
- U.S.P.** :
- Extra sturdy & stable steel frame construction durable & stable
  - Proprietary two coat electro statically powder coated to ensure minimum corrosion & chip resistance
  - Rust proof



# UPRIGHT X - B I K E

DOMESTIC

# TOPPRO®

## TP-200



### SPECIFICATIONS

- Dimension** : 35"(L) x 18"(H) x 42"(H)
- Resistance** : 8 Levels Manual
- Resistance System** : Friction free magnetic resistance
- Fly Wheel** : 5 Kgs, precision balanced
- Drive System** : Centre design drive, super silent poly-V belt driven
- Pedals** : Self balanced extra wide paddles with adjustable straps
- Seat** : Ergonomically designed comfortable seat
- Seat Adjustment** : 8 Levels vertical seat adjustment
- Handle Bars** : U-Bar Style, in built contact heart rate sensor with hand grips
- Display** : LCD
- Display Feedback** : Multi feedback readout display Time, Speed, Distance, Odo, Pulse & Calories
- Net Weight** : 15.5 Kgs
- User Weight** : 100 Kgs
- Crank** : Single piece crank assembly
- U.S.P.** : Extra sturdy & stable steel frame construction durable & stable
- Proprietary two coat electro statically powder coated
  - Rust proof



# TP-200U



# UPRIGHT BIKE

LIGHT COMMERCIAL

# TOPPRO®

## TP-825U

### SPECIFICATIONS

- Dimension** : 48"(L) x 22"(H) x 56"(H)
- Resistance** : 1-8 Levels
- Resistance System** : Electro Magnetic Resistance
- Fly Wheel** : 8 Kgs, precision balanced
- Drive System** : Centre design drive, super silent poly-V belt driven
- Pedals** : Self balanced extra wide paddles with adjustable straps
- Seat** : Ergonomically designed comfortable seat
- Seat Adjustment** : 8 Levels vertical seat adjustment
- Handle Bars** : U-Bar Style, in built contact heart rate sensor with hand grips
- Display** : LCD
- Display Feedback** : Multi feedback readout display Time, Speed, Distance, Odo, Pulse & Calories
- Net Weight** : 40 Kgs
- User Weight** : 130 Kgs
- Crank** : 3 Piece crank assembly
- U.S.P.** : Extra sturdy & stable steel frame construction durable & stable
- Proprietary two coat electro statically powder coated
  - Rust proof



# TP-825U



# UPRIGHT BIKE

LIGHT COMMERCIAL

# TOPPRO®

## TP-870U

### SPECIFICATIONS

- Dimension** : 48"(L) x 24"(H) x 58"(H)
- Resistance** : 8 Levels Manual
- Resistance System** : Friction free magnetic resistance
- Fly Wheel** : 8 Kgs, precision balanced
- Drive System** : Centre design drive, super silent poly-V belt driven
- Pedals** : Self balanced extra wide paddles with adjustable straps
- Seat** : Ergonomically designed comfortable seat
- Seat Adjustment** : 8 Levels vertical seat adjustment
- Handle Bars** : U-Bar Style, in built contact heart rate sensor with hand grips
- Display** : LCD
- Display Feedback** : Multi feedback readout display Time, Speed, Distance, Odo, Pulse & Calories
- Net Weight** : 34 Kgs
- User Weight** : 120 Kgs
- Crank** : 3 Piece crank assembly
- U.S.P.** : Extra sturdy & stable steel frame construction durable & stable
- Proprietary two coat electro statically powder coated
  - Rust proof



# TP-870U



# UPRIGHT BIKE

LIGHT COMMERCIAL

# TOPPRO®

## TP-900U

### SPECIFICATIONS

<b>Dimension</b>	: 44"(L) x 22"(H) x 55"(H)
<b>Resistance</b>	: 15 Levels Manual
<b>Resistance System</b>	: Friction free magnetic resistance
<b>Fly Wheel</b>	: 8 Kgs, precision balanced
<b>Drive System</b>	: Centre design drive, super silent poly-V belt driven
<b>Pedals</b>	: Self balanced extra wide paddles with adjustable straps
<b>Seat</b>	: Ergonomically designed comfortable seat
<b>Seat Adjustment</b>	: 8 Levels vertical seat adjustment
<b>Handle Bars</b>	: U-Bar Style, in built contact heart rate sensor with hand grips
<b>Display</b>	: LCD
<b>Display Feedback</b>	: Multi feedback readout display Time, Speed, Distance, Odo, Pulse & Calories
<b>Net Weight</b>	: 36 Kgs
<b>User Weight</b>	: 130 Kgs
<b>Crank</b>	: 3 Piece crank assembly
<b>Handle Adjustment</b>	: Yes
<b>U.S.P.</b>	: Extra sturdy & stable steel frame construction durable & stable
	• Proprietary two coat electro statically powder coated
	• Rust proof



TP-900U



# UPRIGHT BIKE

LIGHT COMMERCIAL

# TOPPRO®

## TP-9350U

### SPECIFICATIONS

- Dimension** : 45" (L) x 23" (W) x 60" (H)
- Resistance** : 1-24 Levels
- Resistance System** : Electro Magnetic Resistance
- Fly Wheel** : 5 Kgs, precision balanced
- Drive System** : Centre design drive, super silent poly-V belt driven
- Pedals** : Self balanced extra wide paddles with adjustable straps
- Seat** : Ergonomically designed comfortable seat
- Seat Adjustment** : 8 Levels vertical seat adjustment
- Handle Bars** : U-Bar Style, in built contact heart rate sensor with hand grips
- Display** : LCD
- Display Feedback** : Multi feedback readout display Time, Speed, Distance, Odo, Pulse & Calories
- Net Weight** : 38 Kgs
- User Weight** : 135 Kgs
- Crank** : Single piece crank assembly
- U.S.P.** : Extra sturdy & stable steel frame construction durable & stable
- Proprietary two coat electro statically powder coated
  - Rust proof



# TP-9350U



# UPRIGHT BIKE

COMMERCIAL

# TOPPRO®

## TP-8900U

### SPECIFICATIONS

- Dimension** : 54"(L) x 24"(H) x 58"(H)
- Resistance** : 8 Levels Manual
- Resistance System** : Friction free magnetic resistance
- Fly Wheel** : 9 Kgs, precision balanced
- Drive System** : Centre design drive, super silent poly-V belt driven
- Pedals** : Self balanced extra wide paddles with adjustable straps
- Seat** : Ergonomically designed comfortable seat
- Seat Adjustment** : 8 Levels vertical seat adjustment
- Handle Bars** : U-Bar Style, in built contact heart rate sensor with hand grips
- Display** : LCD
- Display Feedback** : Multi feedback readout display Time, Speed, Distance, Odo, Pulse & Calories
- Net Weight** : 45 Kgs
- User Weight** : 120 Kgs
- Crank** : 3 Piece crank assembly
- U.S.P.** : Extra sturdy & stable steel frame construction durable & stable
- Proprietary two coat electro statically powder coated
  - Rust proof



# TP-8900U



# UPRIGHT BIKE

COMMERCIAL

# TOPPRO®

## TP-9500U

### SPECIFICATIONS

- Dimension** : 43" (L) x 24" (W) x 57" (H)
- Resistance** : 1-16 Levels
- Resistance System** : Electro Magnetic Resistance
- Fly Wheel** : 8 Kgs, 2-way inner magnetic flat belt design
- Drive System** : Centre design drive, super silent poly-V belt driven
- Pedals** : Self balanced extra wide paddles with adjustable straps
- Seat** : Ergonomically designed comfortable seat
- Seat Adjustment** : 8 Levels vertical seat adjustment
- Handle Bars** : U-Bar Style, in built contact heart rate sensor with hand grips
- Display** : LCD
- Display Feedback** : Blue Light LCD, Indicating Scan, Time, Speed, Distance, Calorie, Pulse, Body Fat
- Net Weight** : 45 Kgs
- User Weight** : 130 Kgs
- Crank** : Single piece crank assembly
- U.S.P.** : Extra sturdy & stable steel frame construction durable & stable
- Proprietary two coat electro statically powder coated
  - Rust proof
  - Mobile Phone Holder



WWW.TOPPROFITNESS.COM  TOPPROFITNESS  TOPPROFITNESS

# TOPPRO®

India's Premium Fitness Equipments Brand

# SPIN BIKE



# TOPPRO®

## TP-825

TP-825



## DOMESTIC INDOOR SPINNING BIKE

### SPECIFICATIONS

<b>Dimension</b>	: 52"(L) x 20"(W) x 48"(H)
<b>Resistance</b>	: Manual
<b>Fly Wheel</b>	: 5 Kgs
<b>Drive System</b>	: Centre design drive, super silent poly-V belt driven
<b>Pedals</b>	: ABS plastic Pedals
<b>Seat</b>	: Ergonomically designed comfortable seat
<b>Seat Adjustment</b>	: 5 Levels vertical & 4" horizontal seat adjustment
<b>Handle Adjustment</b>	: 5 Level
<b>Display</b>	: LCD
<b>Display Feedback</b>	: Time, Speed, Distance, Scan, Pulse & Calories
<b>Net Weight</b>	: 22 Kgs
<b>User Weight</b>	: 105 Kgs
<b>Crank</b>	: Single Piece crank assembly with 2 way bearing
<b>U.S.P.</b>	: Extra sturdy & stable steel frame construction durable & stable • Proprietary two coat electro statically powder coated • Rust proof



# TOPPRO®

## TP-827



## DOMESTIC INDOOR SPINNING BIKE

### SPECIFICATIONS

Dimension	: 40"(L) x 20"(W) x 48"(H)
Resistance	: Manual
Fly Wheel	: 6 Kgs
Drive System	: Centre design drive, super silent poly-V belt driven
Pedals	: ABS Plastic Pedals
Seat	: Ergonomically designed comfortable seat
Seat Adjustment	: 7 Levels vertical & 4" horizontal seat adjustment
Handle Adjustment	: 7 Level
Display	: LCD
Display Feedback	: Time, Speed, Distance, Calories & Pulse
Net Weight	: 25 Kgs
User Weight	: 120 Kgs
Crank	: 2 Piece crank assembly
U.S.P.	: Extra sturdy & stable steel frame construction durable & stable • Proprietary two coat electro statically powder coated • Rust proof • Extra Shocker



# TOPPRO®

## TP-828

TP-828



## DOMESTIC INDOOR SPINNING BIKE

### SPECIFICATIONS

Dimension	: 42"(L) x 24"(W) x 48"(H)
Resistance	: Manual
Resistance System	: Magnetron resistance
Fly Wheel	: 6 Kgs
Drive System	: Centre design drive, super silent poly-V belt driven
Pedals	: ABS Aluminum Pedals
Seat	: Ergonomically designed comfortable seat
Seat Adjustment	: 6 Levels vertical & 4" horizontal seat adjustment
Handle Adjustment	: 5 Level
Display	: LCD
Display Feedback	: Time, Speed, Distance, Calories & Pulse
Net Weight	: 25 Kgs
User Weight	: 120 Kgs
Crank	: 2 Piece crank assembly
U.S.P.	: Extra sturdy & stable steel frame construction durable & stable • Proprietary two coat electro statically powder coated • Rust proof



# TOPPRO®

## TP-920

TP-920



## LIGHT COMMERCIAL INDOOR SPINNING BIKE

### SPECIFICATIONS

<b>Dimension</b>	: 52"(L) x 20"(W) x 48"(H)
<b>Resistance</b>	: Manual
<b>Fly Wheel</b>	: 18 Kgs
<b>Drive System</b>	: Centre design chain drive system
<b>Pedals</b>	: ABS Aluminum pedals commercial grade
<b>Seat</b>	: Ergonomically designed comfortable seat
<b>Seat Adjustment</b>	: 5 Levels vertical & 3 level horizontal seat adjustment
<b>Handle Adjustment</b>	: 5 Level
<b>Display</b>	: LCD
<b>Display Feedback</b>	: Time, Speed, Distance, Calories & Pulse
<b>Net Weight</b>	: 42.5 Kgs
<b>User Weight</b>	: 120 Kgs
<b>Crank</b>	: 2 Piece crank assembly
<b>U.S.P.</b>	: Extra sturdy & stable steel frame construction durable & stable
	• Proprietary two coat electro statically powder coated
	• Rust proof



**TOPPRO®**

# ORBITREC BIKE



[WWW.TOPPROFITNESS.COM](http://WWW.TOPPROFITNESS.COM) TOPPROFITNESS TOPPROFITNESS

# ORBITREC BIKE

**TOPPRO**

## ORBITREC (O)



### SPECIFICATIONS

<b>Dimension</b>	: 48" (L) x 25" (W) x 61" (H)
<b>Resistance</b>	: Manual, Knob
<b>Power</b>	: 1.5 Volt x 2 AA Size Battery
<b>Crank</b>	: 1 Piece crank assembly
<b>Wheel</b>	: 20" ABS wind wheel
<b>Drive System</b>	: Chain drive
<b>Display</b>	: LCD
<b>Display Feedback</b>	: Display, Scan, Time, Speed, Distance, Odo & Calories
<b>Net Weight</b>	: 25 Kgs
<b>User Weight</b>	: 100 Kgs

ORBITREC (O)



# ORBITREC BIKE

**TOPPRO**

## ORBITREC TP-2050



### SPECIFICATIONS

<b>Dimension</b>	: 48" (L) x 25" (W) x 61" (H)
<b>Resistance</b>	: Manual, Knob
<b>Power</b>	: 1.5 Volt x 2 AA Size Battery
<b>Crank</b>	: 1 Piece crank assembly
<b>Wheel</b>	: 18" Steel wheel
<b>Drive System</b>	: Chain drive
<b>Display</b>	: LCD
<b>Display Feedback</b>	: Scan, Time, Speed, Distance, Odo & Calories
<b>Net Weight</b>	: 27.5 Kgs
<b>User Weight</b>	: 100 Kgs

TP-2050



# ORBITREC BIKE

**TOPPRO**

## ORBITREC TP-2052



### SPECIFICATIONS

<b>Dimension</b>	: 48" (L) x 25" (W) x 61" (H)
<b>Resistance</b>	: Manual, Knob
<b>Power</b>	: 1.5 Volt x 2 AA Size Battery
<b>Crank</b>	: 1 Piece crank assembly
<b>Wheel</b>	: 18" Steel Wheel
<b>Drive System</b>	: Chain drive
<b>Display</b>	: LCD
<b>Display Feedback</b>	: Scan, Time, Speed, Distance, Odo, Pulse & Calories
<b>Net Weight</b>	: 30.5 Kgs
<b>User Weight</b>	: 100 Kgs

TP-2052



# ORBITREC BIKE

**TOPPRO**

## ORBITREC MULTI 333

### 3 IN ONE

#### SPECIFICATIONS

<b>Dimension</b>	: Unfold - 86"(L) x 25"(W) x 61"(H) & Folding 48" (L) x 25" (W) x 61" (H)
<b>Resistance</b>	: Manual, Knob
<b>Power</b>	: 1.5 Volt x 2 AA Size Battery
<b>Crank</b>	: 1 Piece crank assembly
<b>Wheel</b>	: 20" ABS Wind Wheel
<b>Drive System</b>	: Chain drive
<b>Multi Workout</b>	: Additional stepper & twister are provided
<b>Display</b>	: LCD
<b>Display Feedback</b>	: Scan, Time, Speed, Distance, Odo, Pulse & Calories
<b>Net Weight</b>	: 35.5 Kgs
<b>User Weight</b>	: 100 Kgs
<b>Attachment</b>	: Hydraulic Stepper Twister



MULTI 333



**TOPPRO®**

# AIR BIKE

 [WWW.TOPPROFITNESS.COM](http://WWW.TOPPROFITNESS.COM)  [TOPPROFITNESS](https://www.facebook.com/topprofitness)  [TOPPROFITNESS](https://www.instagram.com/topprofitness)



# AIR BIKE

## TP-204

### SPECIFICATIONS

- Dimension** : 43" (L) X 24" (W) X 46" (H)  
**Resistance** : Manual, belt brake resistance  
**Power** : 1.5 Volt x 1, AA size battery  
**Fan/Wind Wheel** : Fiber wind wheel, diameter of 450mm with breaking resistance track, consists of adjustable tension strap with control knobs
- Drive System** : Poly-V Belt drive  
**Pedals** : Self balancing closes spacing, enlarge, impact-absorbing, fit to any size user and provides gentle movements to reduce lower body stress
- Handle Bar** : Dual action combines cycling with rowing action handle bar foam hand grips
- Seat** : Ergonomically designed comfortable seat  
**Seat Adjustment** : 7 levels vertical seat adjustment  
**Display** : LCD display computerized console  
**Display Feedback** : Multi feedback read out displays scan, time, speed, distance, calories
- User Weight** : 95 Kgs  
**Crank Assembly** : Single piece crank assembly  
**Frame Structure** : Extra sturdy & stable steel frame construction durability & stability  
**Frame Finishing** : Proprietary two coat electro statically powder coated corrosion and chip resistance

# TOPPRO®



WWW.TOPPROFITNESS.COM  TOPPROFITNESS  TOPPROFITNESS

# AIR BIKE

# TOPPRO®

## TP-205

### SPECIFICATIONS

- Dimension** : 43" (L) X 24" (W) X 46" (H)
- Resistance** : Manual, belt brake resistance
- Power** : 1.5 Volt x 1, AA size battery
- Fan/Wind Wheel** : Fiber wind wheel, diameter of 450mm with breaking resistance track, consists of adjustable tension strap with control knobs
- Drive System** : Poly-V Belt drive
- Pedals** : Self balancing closes spacing, enlarge, impact-absorbing, fit to any size user and provides gentle movements to reduce lower body stress
- Handle Bar** : Dual action combines cycling with rowing action handle bar foam hand grips
- Seat** : Ergonomically designed comfortable seat
- Seat Adjustment** : 7 levels vertical seat adjustment
- Display** : LCD display computerized console
- Display Feedback** : Multi feedback read out displays scan, time, speed, distance, calories
- User Weight** : 95 Kgs
- Crank Assembly** : Single piece crank assembly
- Frame Structure** : Extra sturdy & stable steel frame construction durability & stability
- Frame Finishing** : Proprietary two coat electro statically powder coated corrosion and chip resistance



WWW.TOPPROFITNESS.COM  TOPPROFITNESS  TOPPROFITNESS

# AIR BIKE

# TOPPRO®

## TP-206

### SPECIFICATIONS

- Dimension** : 62" (L) X 24" (W) X 46" (H)
- Resistance** : Manual, belt brake resistance
- Power** : 1.5 Volt x 1, AA size battery
- Fan/Wind Wheel** : Fiber wind wheel, diameter of 450mm with breaking resistance track, consists of adjustable tension strap with control knobs
- Drive System** : Poly-V Belt drive
- Pedals** : Self balancing closes spacing, enlarge, impact-absorbing, fit to any size user and provides gentle movements to reduce lower body stress
- Handle Bar** : Dual action combines cycling with rowing action handle bar foam hand grips
- Seat** : Ergonomically designed comfortable seat
- Seat Adjustment** : 7 levels vertical seat adjustment
- Display** : LCD display computerized console
- Display Feedback** : Multi feedback read out displays scan, time, speed, distance, calories
- User Weight** : 95 Kgs
- Crank Assembly** : Single piece crank assembly
- Frame Structure** : Extra sturdy & stable steel frame construction durability & stability
- Frame Finishing** : Proprietary two coat electro statically powder coated corrosion and chip resistance



[WWW.TOPPROFITNESS.COM](http://WWW.TOPPROFITNESS.COM) [TOPPROFITNESS](https://www.facebook.com/topprofitfitness) [TOPPROFITNESS](https://www.instagram.com/topprofitfitness)

# AIR BIKE

# TOPPRO®

## TP-6161

### SPECIFICATIONS

- Dimension** : 42" (L) X 22" (W) X 45" (H)
- Resistance** : Manual, belt brake resistance
- Power** : 1.5 Volt x 1, AA size battery
- Fan/Wind Wheel** : Fiber wind wheel, diameter of 450mm with breaking resistance track, consists of adjustable tension strap with control knobs
- Drive System** : Chain drive
- Pedals** : Self balancing closes spacing, enlarge, impact-absorbing, fit to any size user and provides gentle movements to reduce lower body stress
- Handle Bar** : Dual action combines cycling with rowing action handle bar foam hand grips
- Seat** : Ergonomically designed comfortable seat
- Seat Adjustment** : 9 levels vertical seat adjustment
- Display** : LCD display computerized console
- Display Feedback** : Multi feedback read out displays scan, time, speed, distance, calories
- Accessory Holder** : Water bottle holder
- User Weight** : 95 Kgs
- Crank Assembly** : Single piece crank assembly
- Frame Structure** : Extra sturdy & stable steel frame construction durability & stability
- Frame Finishing** : Proprietary two coat electro statically powder coated corrosion and chip resistance



# TOPPRO®

# HOME GYM SERIES



[WWW.TOPPROFITNESS.COM](http://WWW.TOPPROFITNESS.COM) [f](#) TOPPROFITNESS [i](#) TOPPROFITNESS

# HOME GYM

## POWER DELUXE 150

# TOPPRO®

### SPECIFICATIONS

Dimension	: 65" (L) x 40" (W) x 84" (H)
Tube Size	: 70 mm x 50 mm, 50mm Ø
Tube Thickness	: 10 Gauge
Frame	: High tensile strength steel, continuous welded, factory assembled weight frame
Weight Guide Rods	: 25 mm, Chrome plated steel, highly polished for smooth movements
Pulley	: Fiber glass reinforced nylon pulleys with high quality bearing
Cable	: 05mm dia, 250 lbs rated steel cable as transmitting wire nylon coated
Finishing	: Electro statically applied powder coated rust proof
Weight plate	: Rubberized PVC weight plate make workout noiseless
Weight Stack	: 150 LBS
Net Weight	: 146 kgs
User Weight	: 125 Kgs
Colour	: Main Frame : Black   Upholstery : Black

### INCLUDED ACCESSORIES

LAT PULL BAR | SILVER BAR | SILVER STRAP  
TRICEPS ROPE | ANKLE STRAP

### EXERCISE SCOPE

SEATED BENCH PRESS | ABDOMINAL CRUNCH | TRICEPS PUSH DOWN  
LAT PULL DOWN | PREACHER CURL | PEC DEC FLY | SEATED ROW  
LEG EXTENSION/CURL



CERTIFIED  
BY LPI TAIWAN



# HOME GYM X-POWER

## SPECIFICATIONS

Dimension	: 65" (L) x 40" (W) x 84" (H)
Tube Size	: 70 mm x 50 mm, 50mm Ø
Tube Thickness	: 10 Gauge
Frame	: High tensile strength steel, continuous welded, factory assembled weight frame
Weight Guide Rods	: 25 mm, Chrome plated steel, highly polished for smooth movements
Pulley	: Fiber glass reinforced nylon pulleys with high quality bearing
Cable	: 05mm dia, 250 lbs rated steel cable as transmitting wire nylon coated
Finishing	: Electro statically applied powder coated rust proof
Weight plate	: Rubberized PVC weight plate make workout noiseless
Weight Stack	: 150 LBS
Weight Stack Cover	: Nylon Heavy Net
Net Weight	: 146 kgs
User Weight	: 125 Kgs
Colour	: Main Frame : Black   Upholstery : Black

## INCLUDED ACCESSORIES

LAT PULL BAR | SILVER BAR | SILVER STRAP  
TRICEPS ROPE | ANKLE STRAP

## EXERCISE SCOPE

SEATED BENCH PRESS | ABDOMINAL CRUNCH | TRICEPS PUSH DOWN  
LAT PULL DOWN | PREACHER CURL | PEC DEC FLY | SEATED ROW  
LEG EXTENSION/CURL

# TOPPRO®



# X-POWER



CERTIFIED  
BY LPI TAIWAN



# HOME GYM PROMAX 1500

# TOPPRO®

## SPECIFICATIONS

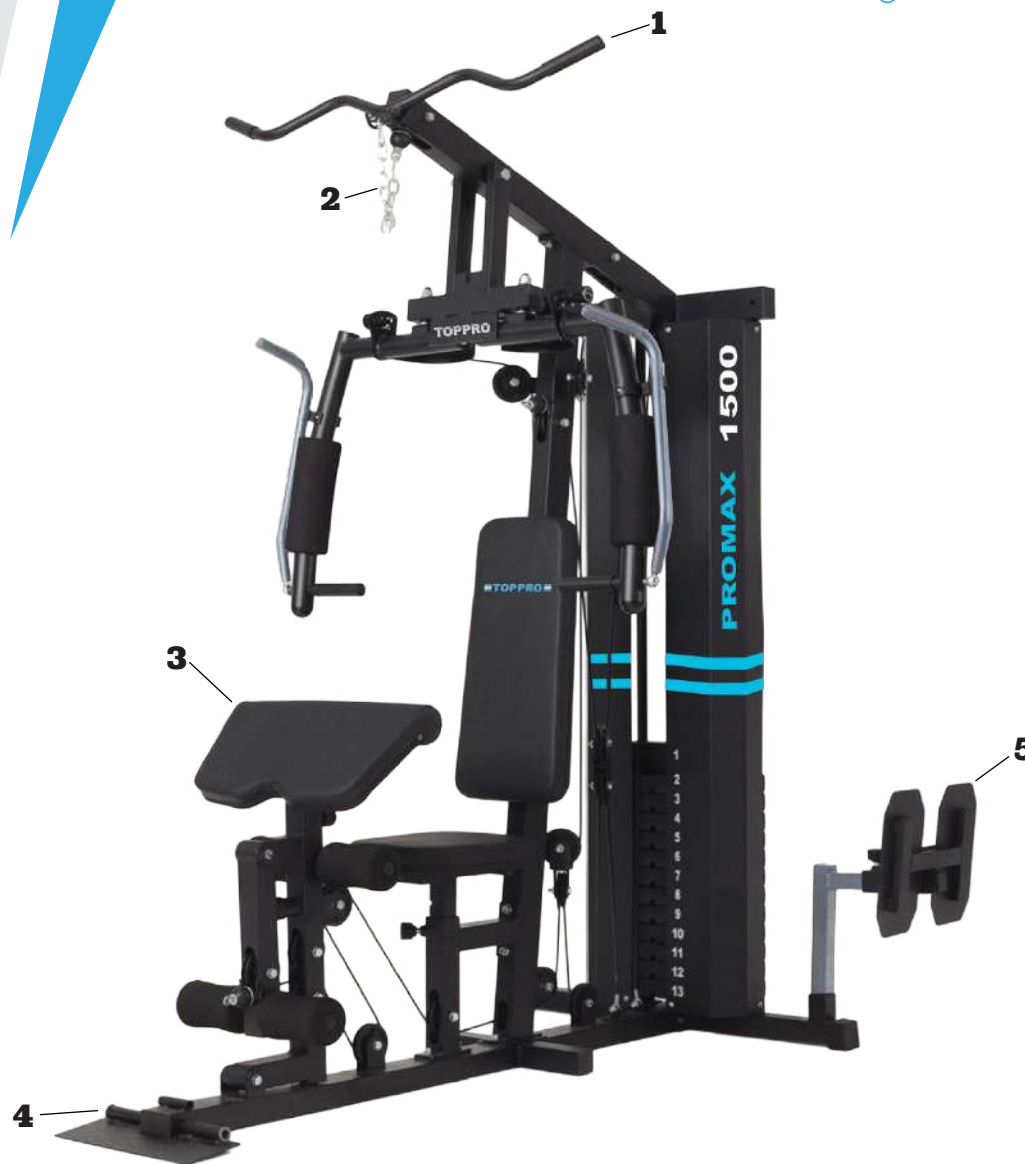
Dimension	: 69" (L) x 34" (W) x 78" (H)
Tube Size	: 70 mm x 50 mm, 50mm Ø
Tube Thickness	: 10 Gauge
Frame	: High tensile strength steel, continuous welded, factory assembled weight frame
Weight Guide Rods	: 25 mm, Chrome plated steel, highly polished for smooth movements
Pulley	: Fiber glass reinforced nylon pulleys with high quality bearing
Cable	: 5.0mm dia, 250 lbs rated steel cable as transmitting wire nylon coated
Finishing	: Electro statically applied powder coated rust proof
Weight plate	: Rubberized PVC weight plate make workout noiseless
Weight Stack	: 150 LBS
Weight Stack Cover	: Steel cover powder coating
Net Weight	: 146 kgs
User Weight	: 160 Kgs
Colour	: Main Frame : Black   Upholstery : Black

## INCLUDED ACCESSORIES

1. LAT PULL BAR | 2. EXTENSION CHAIN | 3. BICEP CURL ATTACHMENT  
4. BICEP ROD | 5. LEG PRESS ATTACHMENT

## EXERCISE SCOPE

SEATED BENCH PRESS | ABDOMINAL CRUNCH | TRICEPS PUSH DOWN  
LAT PULL DOWN | PREACHER CURL | PEC DEC FLY | SEATED ROW  
LEG EXTENSION/CURL | LEG PRESS



CERTIFIED  
BY LPI TAIWAN



PROMAX 1500

# HOME GYM PROMAX 2000

## SPECIFICATIONS

Dimension	: 59" (L) x 39" (W) x 80" (H)
Tube Size	: 70 mm x 50 mm, 50mm Ø
Tube Thickness	: 10 Gauge
Frame	: High tensile strength steel, continuous welded, factory assembled weight frame
Weight Guide Rods	: 25 mm, Chrome plated steel, highly polished for smooth movements
Pulley	: Fiber glass reinforced nylon pulleys with high quality bearing
Cable	: 5.0mm dia, 250 lbs rated steel cable as transmitting wire nylon coated
Finishing	: Electro statically applied powder coated rust proof
Weight plate	: Rubberized PVC weight plate make workout noiseless
Weight Stack	: 150 LBS
Weight Stack Cover	: Steel cover powder coating
Net Weight	: 158 kgs
User Weight	: 160 Kgs
Colour	: Main Frame : Black / Gray / Cherry

## INCLUDED ACCESSORIES

1. LAT PULL BAR
2. EXTENSION CHAIN
3. TRICEP ROPE
4. LEG PRESS ATTACHMENT
5. BICEP ROD
6. BICEP CURL ATTACHMENT

## EXERCISE SCOPE

LEG PRESS | CHEST PRESS | PEC FLY | TRICEPS PUSH DOWN  
REAR DELT | LEG EXTENSION | LAT PULL DOWN | BICEP CURL  
ABDOMINAL CRUNCH

# TOPPRO®



CERTIFIED  
BY LPI TAIWAN



# HOME GYM TECHNO 5000

# TOPPRO®

## SPECIFICATIONS

Dimension	: 93" (L) x 52" (W) x 85" (H)
Seat	: PU Seats Profiled
Tube Thickness	: 10 Gauge
Frame	: High tensile strength steel, continuous welded, factory assembled weight frame
Weight Guide Rods	: 25 mm, Chrome plated steel, highly polished for smooth movements
Pulley	: Aluminium pulleys with high quality bearing
Cable	: 5.0mm dia, 500 lbs rated steel cable as transmitting wire nylon coated
Finishing	: Electro statically applied powder coated rust proof
Weight plate	: MS weight plates (19+1)
Weight Stack	: 100 Kgs
Weight Stack Cover	: Steel cover powder coating
Net Weight	: 263 kgs
User Weight	: 200 Kgs
Colour	: Main Frame : Black   Upholstery : Black

## INCLUDING ACCESSORIES

LAT PULL BAR | BICEP BAR  
TRICEPS ROPE | EXTENSION CHAIN

## EXERCISE SCOPE

SEATED BENCH PRESS | ABDOMINAL CRUNCH | TRICEPS PUSH DOWN  
LAT PULL DOWN | PREACHER CURL | PEC DEC FLY | SEATED ROW  
LEG EXTENSION/CURL



CERTIFIED  
BY LPI TAIWAN



**TOPPRO®**

# MASSAGER *SERIES*



[WWW.TOPPROFITNESS.COM](http://WWW.TOPPROFITNESS.COM)  [TOPPROFITNESS](#)  [TOPPROFITNESS](#)

# MASSAGER SERIES

## TP-001C



### SPECIFICATIONS

Dimension	: 24" (L) X 28" (W) X 48" (H)
Motor	: 1.5 HP
Power Requirements	: 220V AC
Speed Range	: 50 Levels
Amplitude	: 8°
Display	: LED
Console Feedback	: Count   Calories   Distance   Speed   Time
Exercise Applications	: Upright, Cross Leg, Bend Leg Slightly, Kneel Down with hand palm
User Weight Capability	: 125 Kgs
Net Weight	: 45 Kgs
USP	<ul style="list-style-type: none"> <li>• Fat burner use 10 mins a day equals 45 min of running</li> <li>• Improves blood circulation</li> <li>• Increases mobility of joints</li> </ul>

# TOPPRO®

## COMMERCIAL

## TP-002C



### SPECIFICATIONS

Dimension	: 28" (L) X 27" (W) X 58" (H)
Motor	: 2 HP
Power Requirements	: 220V AC
Speed Range	: 1-30 Levels
Amplitude	: 8°
Display	: 5 Window LED
Console Feedback	: Count   Calories   Distance   Speed   Time
Exercise Applications	: Upright, Cross Leg, Bend Leg Slightly, Kneel Down with hand palm
User Weight Capability	: 160 Kgs
Net Weight	: 65 Kgs
USP	<ul style="list-style-type: none"> <li>• Fat burner use 10 mins a day equals 45 min of running</li> <li>• Improves blood circulation</li> <li>• Increases mobility of joints</li> </ul>

# MASSAGER SERIES

## FOOT & CALF MASSAGER

### TP-8500



#### SPECIFICATIONS

Dimensions : 12.5"(L) x 23"(W) x 9.75"(H)

USP : Multi use Massager

- Flexible rubber kneading pads that give the feeling of a real massage; 4 automatic programs and 3 custom massage modes.
- Powerful 40W motor, AC-220-240V, 50 Hz.
- Easily adjustable speed and steering; Simple, convenient, reliable, and durable to use;
- Perfect for you when you want to relax and enjoy some much-needed luxury.
- 3 custom modes to target the tip of your toes, arch of the foot, sole of the foot with adjustable kneading speed.
- Can be used while sitting on a chair or lying on a bed to massage different parts like Calves, Arms and Hamstrings. With Heat Massage Function.
- Auto shut off feature activates after the massager has been in use for 15 minutes

# TOPPRO®

## LEG & FOOT MASSAGER

### TP-8700



#### SPECIFICATIONS

Dimensions : 18"(L)x25"(W)x23"(H)

Colour : RED

USP

- Pressure modes for Relax Massager
- All directional massage: Two actions, can easily massage foot, calves, knee.
- Multi-angle Massage: 0° to 90°  
Heating Function: The far infrared heating device can improve collateral circulation and blood circulation.
- Special Rolling Massage: Comfortable rolling massage and curing sunstroke for sole. Three Auto programs will massage your feet, ankles and calves all around.
- With Heat Massage Function.
- The leg massager provides two vibrations on each side.  
Auto shut off feature activates after the massager has been in use for 15 minutes.

# MASSAGER SERIES

## MASSAGER GUN A124 PHOENIX



### SPECIFICATIONS

- Dimensions : 25(L)X23(W) Cms  
Power Charger : Rated input 100 ~ 240v 50/60HZ 1A  
Battery Rated Voltage : 24v DC  
Type : Li-ion  
Capacity : 2500 Mah  
Working Hour : 4-6 Hours  
Massage Head : 9 Different massage heads  
Gun Massage Weight : 1 Kg  
USP : Including 9 different Massage heads & 30-speed levels: Our muscle massager gun boasts 9 massage heads and 30-speed levels to target various massage groups, including options for deep tissue. Ideal for use in your legs, arms, back, torso and neck.
- Effectively reduce muscle stiffness and sore pain, increasing blood circulation.
  - 10 minutes intelligent timing guarantees long life of the machine.
  - 2500 mah large capacity lithium battery.
  - With over-protection, overheat protection and other safety protection devices, safe to use.
  - Suitable for recovery after sports fatigue, rehabilitation after sports, injury, pain relief during the convalescence period of surgery, as well as reducing inflammatory reaction.

**TOPPRO®**

# TOPPRO<sup>®</sup>

# BENCH

# SERIES

 [WWW.TOPPROFITNESS.COM](http://WWW.TOPPROFITNESS.COM)  [TOPPROFITNESS](https://www.facebook.com/topprofitfitness)  [TOPPROFITNESS](https://www.instagram.com/topprofitfitness)



# BENCH SERIES

**FLAT BENCH TP-100**



**CURVE BENCH TP-200**



# TOPPRO®

**INCLINE/FLAT BENCH TP-300**



**MULTI BENCH TP-330**



[WWW.TOPPROFITNESS.COM](http://WWW.TOPPROFITNESS.COM) [f TOPPROFITNESS](https://www.facebook.com/topprofitfitness) [i TOPPROFITNESS](https://www.instagram.com/topprofitfitness)

# BENCH SERIES

**MULTI BENCH TP-350**



**MULTI BENCH TP-400**



# TOPPRO®

**INCLINE/FLAT BENCH TP-450**



**MULTI OLYMPIC BENCH TP-700**



WWW.TOPPROFITNESS.COM  TOPPROFITNESS  TOPPROFITNESS

# TOPPRO®

## STEPPER & TWISTER SERIES



[WWW.TOPPROFITNESS.COM](http://WWW.TOPPROFITNESS.COM)  TOPPROFITNESS  TOPPROFITNESS

# STEPPER & TWISTER SERIES

# TOPPRO®

## STEPPER

**TP-404**



## MINI STEPPER

**TP-306CA**



## STANDING TWISTER

**TP-TS 01**



## STANDING TWISTER


**TP-TS 02**



**TOPPRO®**

# AB MACHINE



[WWW.TOPPROFITNESS.COM](http://WWW.TOPPROFITNESS.COM)  [TOPPROFITNESS](https://www.facebook.com/topprofitness)  [TOPPROFITNESS](https://www.instagram.com/topprofitness)

# AB MACHINE

**TOPPRO®**



# TP-AB KING PRO

TP-AB KING PRO



[WWW.TOPPROFITNESS.COM](http://WWW.TOPPROFITNESS.COM)  TOPPROFITNESS  TOPPROFITNESS

**TOPPRO®**

# ROWING MACHINE

[WWW.TOPPROFITNESS.COM](http://WWW.TOPPROFITNESS.COM)  [TOPPROFITNESS](#)  [TOPPROFITNESS](#)



# ROWING MACHINE

**TOPPRO®**

## TP - 403



TP - 403



[WWW.TOPPROFITNESS.COM](http://WWW.TOPPROFITNESS.COM)  TOPPROFITNESS  TOPPROFITNESS



*Celebrating*  
**1 MILLION**  
*Happy Customers*

**QUALITY**

**COMMITMENT**

**SERVICE**



**K. C. VERMA AND COMPANY**

73-74, Basti Nau, Jalandhar-144002 Punjab (India)

☎ 7528902890 | 9815122445 ✉ [topprofitness@gmail.com](mailto:topprofitness@gmail.com)

🌐 [WWW.TOPPROFITNESS.COM](http://WWW.TOPPROFITNESS.COM)

